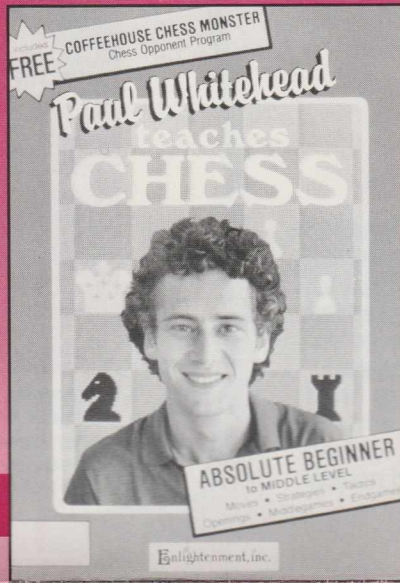


YOU TOO CAN BECOME A

CHESS GENIUS!

WITH THE WORLD'S FIRST
ANIMATED, INTERACTIVE
CHESS TUTORIAL!



"The most useful chess software yet produced."

— Chess Life

"A valuable learning tool and a must to own."

— Commodore Magazine

"Expert chess counsel, and nicely executed graphics."

— LOTUS

"If I were banished to a desert island, this is the first item I'd take."

— Toronto Personal Computer Club

"Deserves accolades for both concept and execution."

— PC World

"A standard in the industry for years to come."

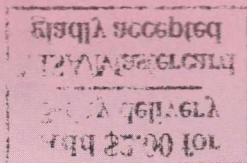
— MicroTimes

"A different and quite appealing approach."

— A +

It Teaches...and it Plays Too!

Call us toll-free or mail this form to: PO Box 20937 • Piedmont, CA • 94620-0937



Circle Card # _____

Card # _____

Total Enclosed \$ _____

Phone # _____

City, St, Zip _____

Shipping \$ 3.20

Address _____

Name _____

Enlightenment, inc.

PO Box 20937 • Piedmont, CA • 94620-0937

800-231-0821

Circle 10491

- ☐ Bobby Fischer's Career
- ☐ 20 Animated Chess Classics
- ☐ Modern Sicilian Defense
- ☐ King's Indian Defense
- ☐ Guide to Chess Strategy
- ☐ Paul Whitehead Teaches Chess

100% MONEY BACK GUARANTEE
If you are not completely satisfied,
we will refund your money.
CASH REFUND
CREDIT TO CARD
NO QUESTIONS ASKED

Please send me the following:

**THE WORLD'S ONLY
CHESS TUTORIAL
SOFTWARE**

THE ONLY computer program that teaches you one of the most
popular chess openings: THE SICILIAN DEFENSE
by Grandmaster Garry Kasparov and
Grandmaster Anatoly Karpov
King's Indian Defense

218.82

Enlightenment, inc.

Now, the program...
...the most useful chess software yet produced...
...a valuable learning tool and a must to own...
...Expert chess counsel, and nicely executed graphics...
...If I were banished to a desert island, this is the first item I'd take...
...Deserves accolades for both concept and execution...
...A standard in the industry for years to come...
...A different and quite appealing approach...

It's Like Having A Friendly Chess Master At Your Side

It Teaches...

NOW! The first program that EXPLAINS CHESS STRATEGIES!

Contains over 40 hours of interactive animated instruction from the mind of an American Open Champion. For absolute beginners to seasoned tournament players, the techniques and experience of a Senior Master are exposed! Simple enough for 8-year olds — sophisticated enough for 48-year olds. All ages benefit from the patient direction of their own personal chess mentor.

Painlessly learn tournament-proven chess moves that would take months to learn from books or other chess programs. *Paul Whitehead Teaches Chess* is engagingly unique in its explanation of chess conventions, strategies and tactics. Learn to play chess on a whole different level, where subtle nuances of the game are made clear.

Here is a sampling of what you will see come to life on the screen:

- Rules
- Chess Notation
- Opening Principles
- Piece Development
- Surprise Checks
- Traps
- "Desperado" Moves
- Pins
- Forks
- Skewers
- Overloaded Pieces
- In-Between Moves
- Back-Rank Mate
- Smothered Mates
- Sacrifices
- Blockades
- Fianchettoes
- The Lucena Position
- King & Pawn Endings
- The Active Rook
- King's Gambit
- Ruy Lopez
- Scotch Game
- Gluoco Piano
- Petroff's Defense
- French Defense
- Sicilian Defense
- Caro-Kann
- Pirc Defense
- Center Counter
- English Opening
- Bird's Opening
- Larsen Attack
- Sokolsky's Opening
- Grob's Attack
- Queen's Gambit
- King's Indian
- Benoni Defense
- Nimzo-Indian
- Dutch Defense
- Perpetual Check
- Tempo & Zugzwang
- Isolated Pawns
- Passed Pawns
- Hypermodern Attack
- Triangulation
- Classic Openings
- Quizzes
- Tactics For Each Piece
- King as a Pawn Escort
- Brilliant Queen Moves
- Weak Points in the Opening
- The 3-Pawn Break-through
- Good & Bad Pawn Positions
- Converting a Material Advantage to a Win
- Forcing Checkmate Using Various Piece Combinations

... AND MORE!

Who is Paul Whitehead?

He was a chess master at age 15. At age 17, he became the U.S. Junior Champion, the American Open Champion and the American Class Champion (Master Division). Now in his mid-twenties, Paul Whitehead teaches school while remaining one of the top active chess-players in the U.S.

BOARD NUMBERS

These tell you your exact location within the tutorial. Each board may be a move sequence, a menu or a quiz. With over 1,300 boards of information, the BOARD NUMBERS are a convenient means of finding your way about the tutorial.

COMMENTARY

Up to six lines of expert commentary per screen provide easily understood explanation of the topic being taught.

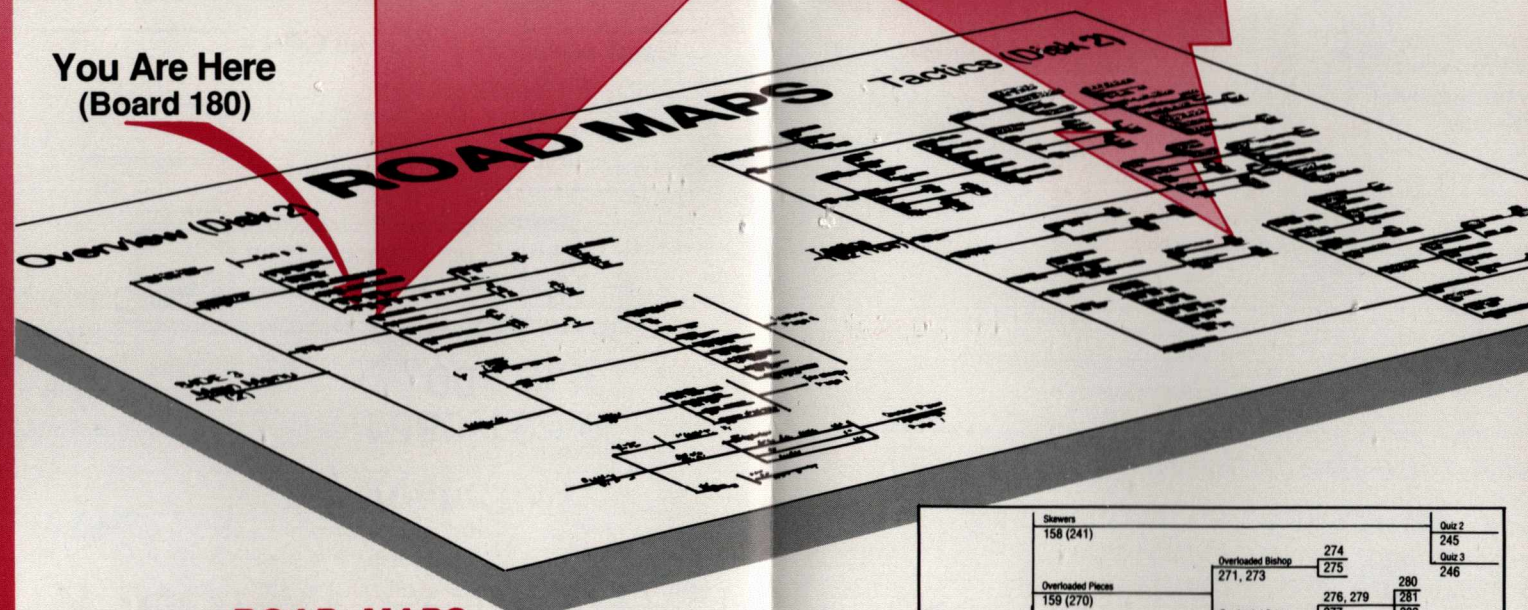
ANIMATED GRAPHICS

The tutorial uses smooth piece movement of chess piece figurines to graphically illustrate the topics. Each screen may orchestrate as many as 50 moves. Your choices are summarized to the right of the chess board.

EXPRESS DEPOT

Simply type in the board number of your desired destination to be taken there immediately. You can hop directly from any part of the tutorial to any other part, or go through it lesson by lesson.

You Are Here
(Board 180)



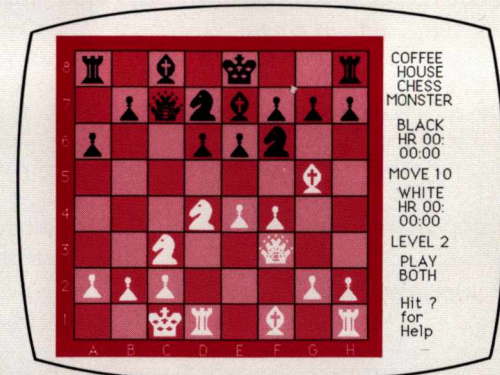
ROAD MAPS

Two detailed, poster-sized ROAD MAPS let you keep track of your journey through the vast knowledgebase. The ROAD MAPS show the structure of the tutorial. Each branch is labeled with BOARD NUMBERS and topic names, and every branch on the ROAD MAP matches a section in the tutorial.

Shewers 158 (241)	Overloaded Bishop 274	Quiz 2 245
Overloaded Pawns 159 (270)	271, 273	Quiz 3 246
Desperados 160 (283)	Overloaded Queen 276, 279	
In-Between Moves 161 (290)	277	
Sacrifices 162 (297)	278	
	272	
	A Desperate Bishop 284, 287	Introduction 315 (324, 325)
	A Desperate Knight 285, 288	Attacks On The h7 Square 316 (325)
	A Desperate Queen Sacrifice 286, 289	Attacks On The g7 Square 317
	Don't Make Automatic Moves 291	The Smothered 318
	To Gain Time 292	
	In-Between Move 293	
	To Improve Action 294	
	295	
	296	
	297	
	298	
	299, 305, 306	
	307, 308, 309	

and Plays Too!

BETTER THAN
Sargon III™ or
Chessmaster 2000™



The Coffeehouse Chess Monster™

When you want to test your new knowledge against an opponent or just play an entertaining game, a single keypress calls the *Coffeehouse Chess Monster™* chess opponent program. The "Monster" will automatically set up the position you were viewing in the tutorial or offer you a new game. It is a fully-featured chess opponent program, with 9 playing levels and all the features you'd expect to find in a top-notch program. And best of all, it is included FREE with every tutorial!

COMPARE!

	Sargon III™	Chessmaster 2000™	Coffeehouse Chess Monster™
Price	\$39.95	\$34.95	FREE
Playing strength	beats 90% of humans	beats Sargon III	better than Sargon III and Chessmaster 2000
Best PC-based program, 1986 World Micro Chess Championship	NO	NO	✓
Auto game/tutorial set up	NO	NO	✓
Works on non-graphics systems (IBM)	NO	NO	✓
Installs on hard disk (IBM)	NO	NO	✓
Shows elapsed time	NO	✓	✓
Smooth piece movement	NO	✓	✓
Multiple difficulty levels	✓	✓	✓
Switch levels during play	✓	✓	✓
Setup board position	✓	✓	✓
Switch sides	✓	✓	✓
Take-back moves	✓	✓	✓
Replay game	✓	✓	✓
Save game to disk	✓	✓	✓
Print game record	✓	✓	✓
Human vs. Human mode	✓	✓	✓
Computer vs. Computer mode	✓	✓	✓
Plays classic games/strategies	✓	✓	✓

Also Available from Enlightenment, Inc.:

Guide to Chess Openings

by Jeremy Silman, USCF Senior Master

\$34.95

Having this product is like carrying two suits of armor into a chess tournament, one for playing the White pieces and one for playing the Black pieces. Where *Paul Whitehead Teaches Chess* shows you everything from how the pieces move to endgame techniques, the *Guide to Chess Openings* is a 50% larger knowledge base that concentrates entirely on the openings—over 60 hours of interactive instruction!

Jeremy Silman is the Editor-in-Chief of International Players' Chess News, and he is one of the top chess players in the United States. In his *Guide to Chess Openings*, he selects the best move for the side that you are playing, explains it, and then offers branching to the most likely moves that your opponent will make.

If your opponent plays perfectly:

Silman shows you how to survive the opening with an even game.

If your opponent makes a mistake:

Silman explains how to beat him and shows the winning move sequences.

For beginners to masters, *Guide to Chess Openings* provides a complete, cohesive system that has been proven in tournament play. It also contains the *Coffeehouse Chess Monster*, our fully-featured chess opponent program. And best of all, you receive the *Coffeehouse Chess Monster* FREE with every copy.

The King's Indian Defense (4.e4 lines)

by Edward A. Chang and Peter Biyiasas, FIDE Grandmaster

\$19.95

This is a complete and very deep analysis of one of the most popular openings in chess. It includes some original analysis by Grandmaster Biyiasas that is revealed here for the first time, as well as the best existing analysis compiled from many sources. You can spring these lines on even the most advanced players. Also includes the *Coffeehouse Chess Monster*.

The Najdorf Sicilian Defense

by Louie Ladow and Peter Biyiasas, FIDE Grandmaster

\$19.95

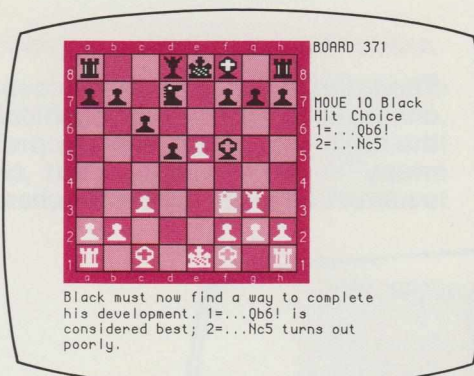
A favorite of World Champion Bobby Fischer and of six-time U.S. Champion Walter Browne, the Najdorf Sicilian is for those fearless souls who want to win even while playing the Black pieces. Again, we have compiled the best existing analysis, then let Grandmaster Biyiasas improve upon it. Includes the *Coffeehouse Chess Monster*.

50 (annotated) Classic Chess Games

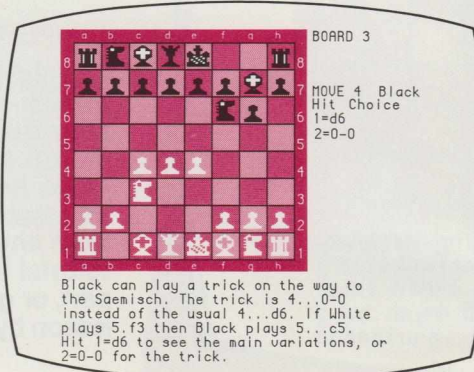
by American Open Champion Paul Whitehead

\$19.95

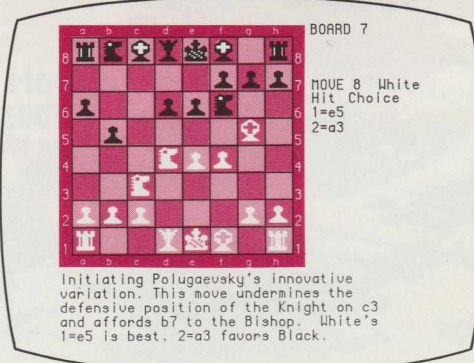
Studying the games of the great chess Masters fully annotated on-screen is an easy way to grasp the action and the subtleties of chess. From the free-swinging 19th Century Masters, through the Bobby Fischer era, to the present Kasparov-Karpov era, Whitehead takes you on a delightful romp through eight ages of chess and fifty of the most smashing, crashing, bone-crushing games of chess ever played. Does not include the *Coffeehouse Chess Monster*.



Guide to Chess Openings



King's Indian Defense



Najdorf Sicilian Defense

Order Today!

**800/621-0851
ext. 100**

(California residents: add
sales tax of your location) \$

Shipping \$ 2.50

Total Enclosed \$

Credit Card #

Yes! ✓ Please send me the following:

\$34.95 ☐ *Paul Whitehead Teaches Chess*

\$34.95 ☐ *Guide to Chess Openings*

\$19.95 ☐ *King's Indian Defense*

\$19.95 ☐ *Najdorf Sicilian Defense*

\$19.95 ☐ *50 Annotated Chess Classics*

✓ **COMPUTER TYPE:**

☐ IBM PC (5.25")

☐ IBM PC (3.5")

☐ Apple II family (5.25")

☐ Commodore 64/128

Name _____

Address _____

City, ST Zip _____

Phone # _____

exp. date: _____

Add \$2.00 for
3-day delivery

VISA/Mastercard
gladly accepted

Call us toll-free or mail this form to: PO Box 20937 • Piedmont, CA • 94620-0937